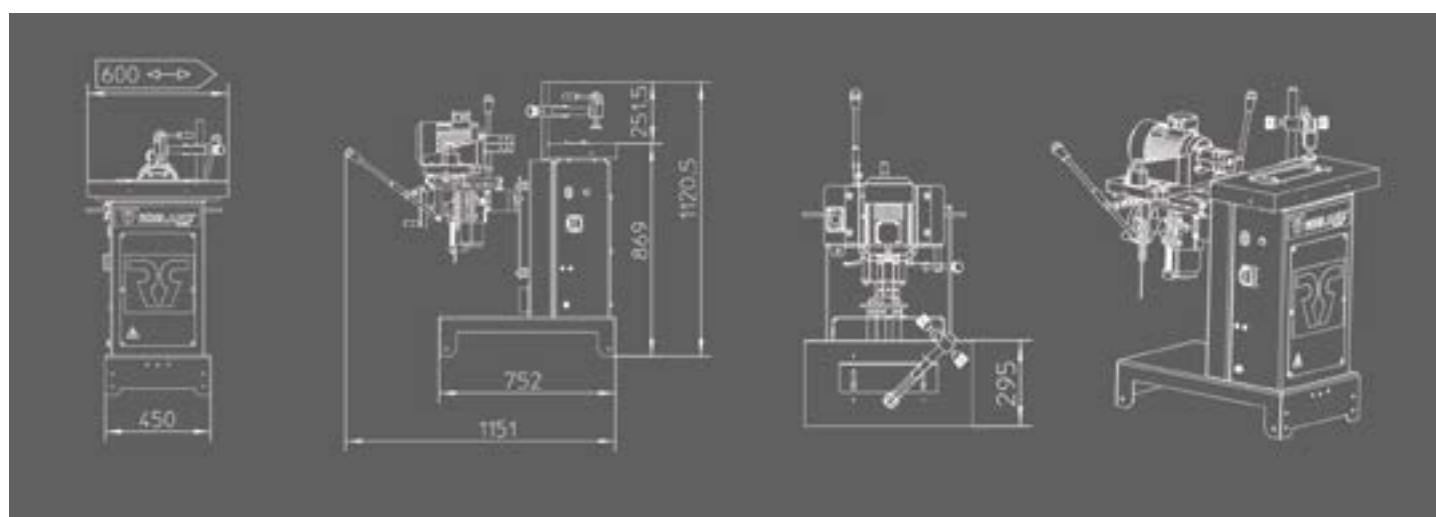




KBM with options

KBM Technical specifications

Weight	180 kg
Motor power (S6)	2,2 kW / 3 hp (single phase)
	3 kW / 4 hp
Dimensions cast iron table	430 x 210 mm
Horizontal movement	165 mm
Maximal working depth	140 mm
Vertical movement of the head	85 mm
Chuck with collet till	16 mm (type ER32/470E)
Drill rotation speed	3000 RPM
Requires straight mortising bit	

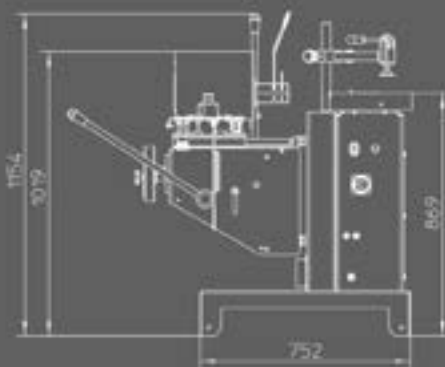


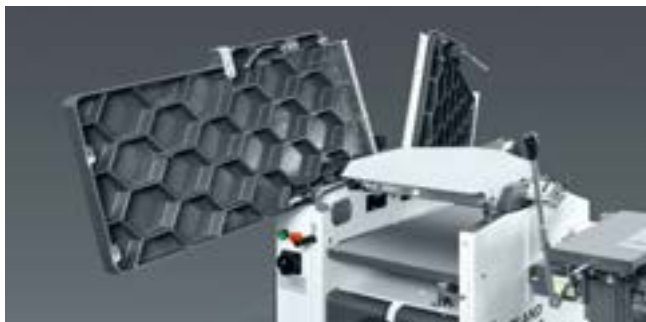


LBM with options

LBM Technical specifications

Weight	240 kg
Motor power (S6)	2,2 kW / 3 hp (single phase)
	3 kW / 4 hp
Dimensions cast iron table	600 x 300 mm
Horizontal movement	180 mm
Maximal working depth	150 mm
Vertical movement of the head	145 mm
Chuck with collet till	16 mm (type: ER32/470E)
Drill rotation speed	3000 RPM (option: dualspeed - 1500/3000 RPM - 3-phase only)
Requires straight mortising bit	





STEEL FRAMEWORK

Robust steel framework that ensures that any vibrations are negligible. This naturally ensures a higher quality result.

HONEYCOMB STRUCTURE

Our cast iron tables have a honeycomb structure for the highest strength per weight ratio. The surface is scraped. This technique with low energy dissipation guarantees a very flat surface.

Microgrooves are applied for easy gliding of the wooden work piece on the cast iron table.

LEVERS

The chuck moves with 2 levers for ease and precision.

The KBM & LBM require the use of straight mortising bits.

DUST EXTRACTION

The dust extraction of the chips is done efficiently at the bottom in such a way that the extraction is never in the working surface.

HANDWHEEL

Ergonomic handwheel with Siko counter for easy height adjustment of the chuck with precision up to 0,1 mm. (Standard on LBM, optional on KBM)



This brochure is for information purposes only. Robland reserves the right to modify machine configurations and specifications without prior notice. Standard configurations can change over time and by point of purchase. Please consult your local dealer for accurate and up to date information.

Robland NV

Kolvestraat 44
8000 Brugge - Belgium
Tel: +32 50 458 925
info@robland.com
www.robland.com



Follow us on Facebook
www.facebook.com/Roblandmachines



Follow us on Instagram
www.instagram.com/robland_nv



Follow us on YouTube
www.youtube.com/robland